



Gas Dosing Systems

CHEMIDOSE LIMITED



Chlorination and De-Chlorination gas
systems

Unit 1
Centre 2000
St. Michael's Road
Sittingbourne
Kent
ME10 3DZ
Tel: 01795 425169
www.chemidose.co.uk

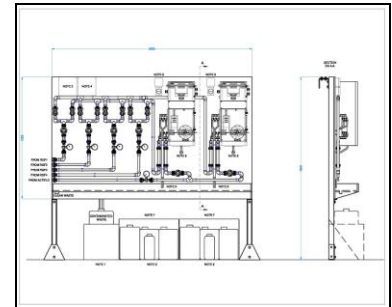
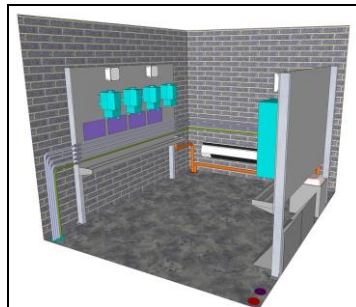
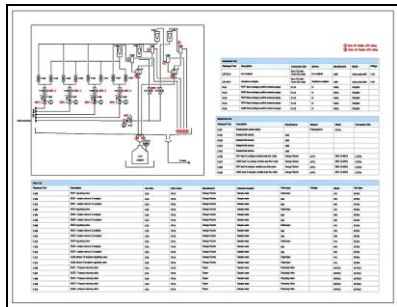
Introduction

Chemidose Limited have designed and installed many gas dosing systems both nationally and internationally.

Due to the many years that we have been installing, we are familiar with all the leading manufacturers' equipment including Evoqua, De Nora and Controlmatic.

The systems are built in our workshop and fully tested before going to site where we work to the customer's individual specifications to install a complete system.

All design work is performed in-house and includes P&IDs, civil and room layouts, mechanical and electrical drawings.



We have robust systems and processes in place to support our design, manufacture and installation teams and have ISO 9001, ISO 14001, OHSAS 18001 and Achilles accreditation.



Our facilities enable us to build anything from a small board up to kitting out a full size shipping container.

This is supplemented by a large range of stock items and an established supplier base.

Below is a short summary showing some of the areas of expertise that Chemidose Limited can deliver on gas dosing systems.

Gas dosing expertise

Equipment

Description

Storage systems

We have experience in installing all sizes of systems from large drum gas stores to small dosing kiosks together with the controls needed to meet the customer's safety specifications.



Ventilation systems

Our ventilation systems are tailored to the size of the room and are controlled using a ventilation controller, linked to the gas detection system and external alarm beacons.



Shutdown systems

We have installed many of the traditional air-driven systems both in drum and cylinder environments but can now offer an all-electric solution that is easier to install and requires no ongoing maintenance.



Gas headers

We can build gas headers in 3000lb carbon steel to the customer's specifications and finished with chemical resistant paint. All headers are fully tested both in our factory and also on site.



Equipment**Description****Valve boards**

We build all the required motive water, ejector and changeover boards at our factory using George Fisher pipework and fittings and fully test prior to shipping to site.

**Gas dosing and control**

Due to many years of installation, we are familiar with gas dosing equipment from all the leading manufacturers. Products include controllers, evaporators, gas feeders and vacuum regulators.

**Safety**

All installations focus heavily on safety. We use market leaders gas detection systems linked to our ventilation controller and audio-visual alarm beacons.

**Analysers**

Chemidose Ltd. are able to supply every stage of the gas dosing process. We build and install analyser boards to ensure the gas treatment equipment works to the optimum conditions.

